



» South Africa

Cape Town

Bayswater Cape Town is in the popular Green Market Square in the city centre. Inside, our modern facilities offer an outstanding learning experience, and from our rooftop terrace you'll have a spectacular view of the city. Social butterfly? We have an extensive programme of attractions, activities and events just for you.

12
Classrooms

170
Capacity

Education
South Africa

10
Average
class size

At a glance

Modern facilities in the heart of the city

Home to Table Mountain, the most iconic South African landmark

Fantastic cultural opportunities

Language

Lessons per week

| | |
|-----------------------|----------|
| General English | 20/25/30 |
| IELTS Preparation | 5+ |
| Cambridge Preparation | 25/30 |
| Private Tuition | 5+ |

Accommodation Options

Homestay

Residence

Key facts

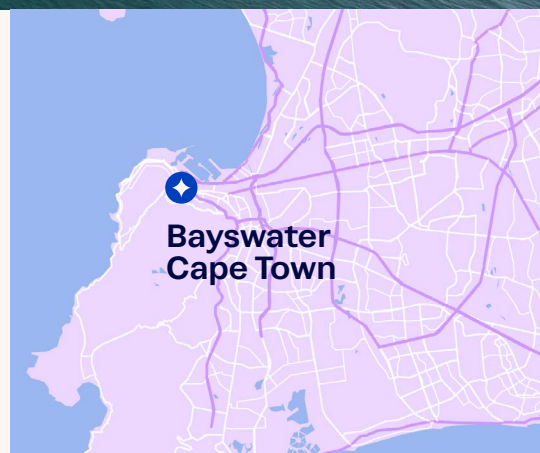
- » Accredited by Education South Africa
- » 12 classrooms
- » Air conditioning
- » Learning centre
- » Kitchen
- » Student lounge

Age Mix

| | |
|-------|-----|
| 18-24 | 40% |
| 25-30 | 25% |
| 30+ | 35% |

Student Nationality

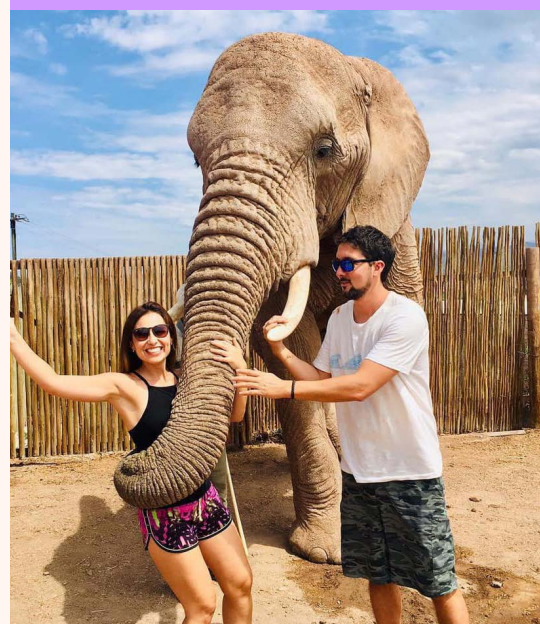
| | |
|-------------|-----|
| LATAM | 50% |
| Middle East | 20% |
| Europe | 10% |
| Asia | 5% |
| Other | 15% |



Bayswater
Cape Town

▲ 40 Shortmarket Street, 1st Floor,
Leadership House Building

Discover cultural opportunities



Find out more at bayswater.ac/cape-town

About the city

Cape Town is perfect for students looking to add safaris, sunbathing and mountain hiking to their timetable. This can be done year-round thanks to South Africa's mild climate, although the winter can get wet!

City Sights

| |
|---------------------------------------|
| Boulder's Beach |
| Cape Point |
| Kirstenbosch National Botanic Gardens |
| Robben Island |
| Table Mountain |

Activities

| |
|--------------------|
| Sports Activities |
| Club Nights |
| Open-Top Bus Ride |
| Theatre Visits |
| Restaurant Dinners |

Excursions

Explore everything South Africa has to offer with excursions to other famous places nearby.

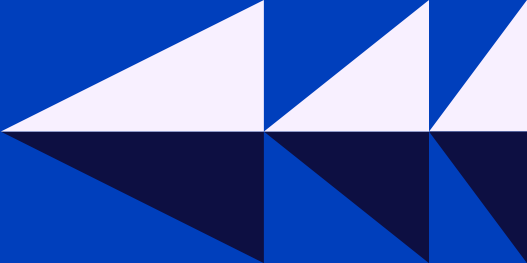
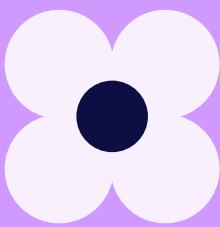
| |
|----------------|
| Whale Watching |
| Seal Island |
| Wine Tasting |
| Safari |

Transport Information

| | |
|---|---------------------------------|
| Closest Airports: | Cape Town International Airport |
| Closest Train Station: | Strand Street Station |
| There is a direct bus link between Cape Town Airport and the city | |

Useful Links

| | |
|-----------|--|
| Tourism | www.tourismcapetown.co.za |
| Transport | www.tct.gov.za/en/transport www.myciti.org.za |

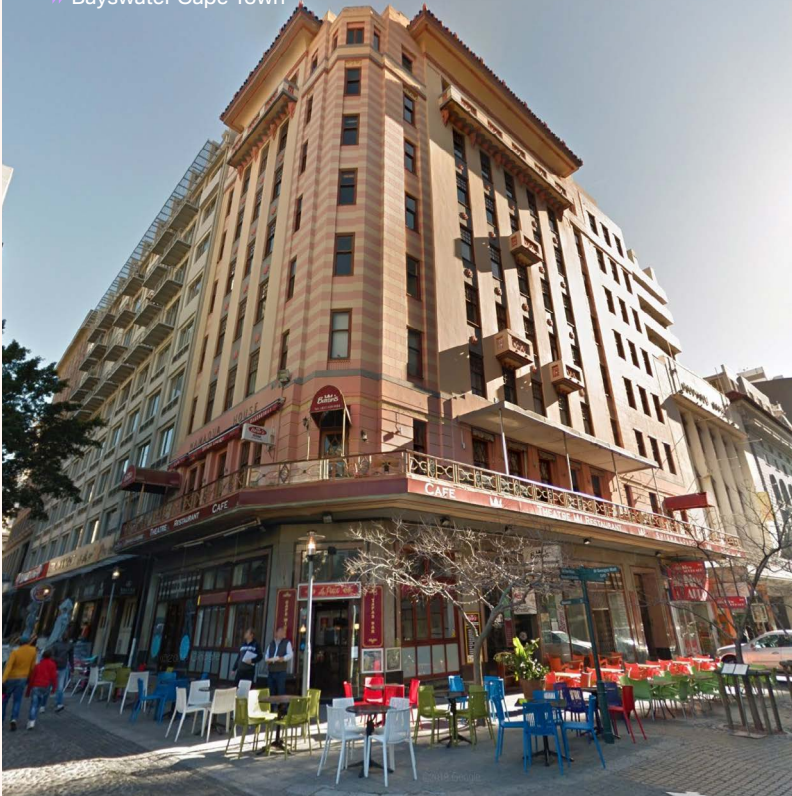


Cost of Living

| | |
|-----------------------------|--------|
| | approx |
| Bus ride: | €1.20 |
| Clubbing: | €10 |
| Soft drink: | €1 |
| Coffee: | €2 |
| Dinner: | €10 |
| Fast Food: | €4 |
| Movie: | €10 |
| Estimated pocket money/week | €180 |

4,618,000
Population

» Bayswater Cape Town



bayswater.ac

E-mail us
bookings@bayswater.ac
Call us
+27 71 888 4828
Visit us
40 Shortmarket Street, 1st Floor, Leadership House Building

